

What is Shipster?

Shipster integrates your warehouse management software or sales platform with your chosen couriers. It books in your shipments with the courier, processes orders using a custom set of shipping rules and generates official shipping labels. This all happens as orders are scanned at the packaging bench.

Key facts

- Shipster is Windows-based
- It is easy to set up and start shipping
- It can integrate with any system e.g. API, File exports
- Every client configuration is bespoke

Customisation

Your Shipster setup is unique to your warehouse and the way you despatch. You can customise many aspects of your shipping: your printed documents, shipping rules, integrations, returns process, printed languages, bar codes, currency data, couriers per bench, invoices and more.



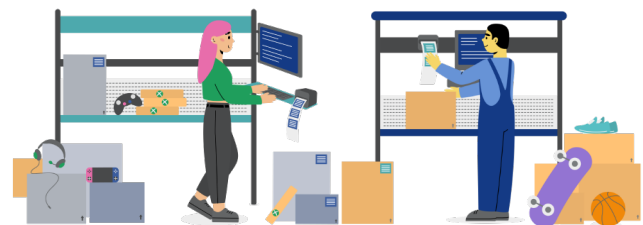
Shipping documents

Shipster will automatically generate the correct shipping documents per order. These include your invoices, packing slips, customs, IOSS, EU and EORI information. For non-official documents or labels, we can use your design and map the unique order information onto it. We can even generate different designs to support multiple brands.



Other System Integrations

The Shipster team also build integrations for other eCommerce and warehouse systems for bespoke projects with more than just shipping requirements.



Custom Shipping Rules

The Shipster rules engine will automate many decisions that need to be made about a shipment at the despatch point; decisions such as, which courier service? What language? Which additional documents? This automation boosts packing speed and accuracy. You can create shipping rules based on your own set of **conditions**, to trigger Shipster **commands**.

Example Conditions

- Shipment weight
- Destination
- Number of items
- Required temperature
- Dangerous goods
- Order value
- Sales channel

Example Commands

- Auto courier service selection
- Generate barcode
- Packaging selection
- Split or bundle parcels
- Include returns label
- Custom pop-up alert to staff
- Print customs declaration

Pricing

Installation— £1500 or £2500

Our flat-rate installation fee is £2500. This covers your initial installation and configuration. The fee is reduced to £1500 if you sign a two-year contract with us. Ongoing support and maintenance is covered by our monthly licence fee.

Our Licences—£50 per unit

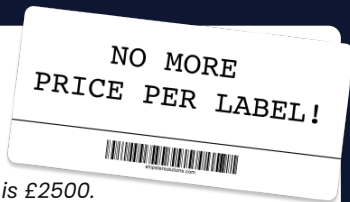
A single licence covers everything you need for one courier per PC. If you had 2 couriers on 2 PCs, that would require 4 Shipster licences.

You can change your number of licences at any time but we offer a minimum of 4. You can experiment with your number of licences (number of couriers and PCs) using our pricing calculator at www.shipstersolutions.com/our-software/pricing/



2 PCs, 2 Couriers = 4 licences

PC = PC X = Courier



Shipster